

STAINLESS STEEL SPEED CONTROL MUFFLER

SSSCM-SERIES

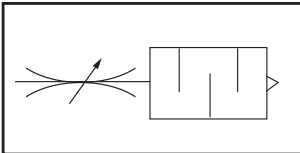


SSSCM-Series stainless steel muffler with speed control provides infinite variation of control of airflow at an acceptable sound level on the exhaust ports of air valves or single acting cylinder with complete safety. They are constructed with 300-Series stainless steel materials, therefore they are resistant to atmospheric corrosion, foodstuffs, sterilizing solutions, many organic chemicals, dyestuffs and wide variety of inorganic chemicals.

An external adjustment screw accurately varies orifice opening from closed to full flow as required. The final position can then be lock in place by the lock nut. The surrounding sleeve of stainless steel element reduces exhaust air noise. And it is protected by the integral stainless steel shroud/cage.

Unit should be mounted in a protective position free from excessive vibration. Use wrench on hex head to tighten unit to the device. All units contain 70-micron filter element.

Symbol



HOW TO ORDER

SSSCM

Stainless Steel
Speed Control Muffler



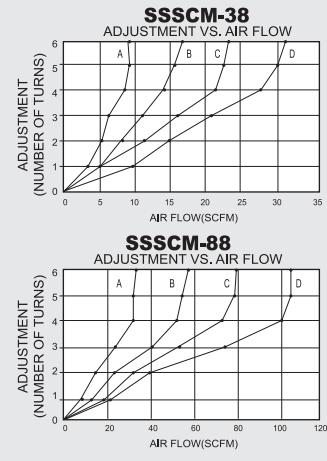
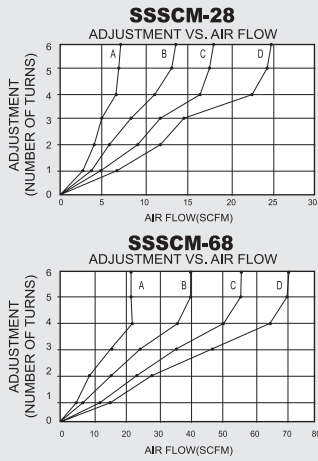
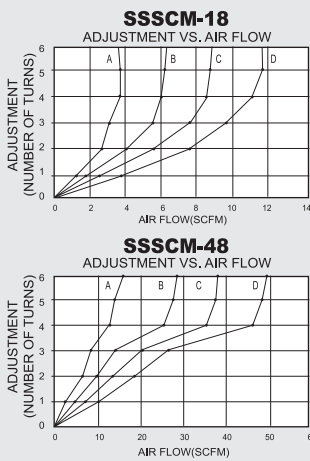
Connection

18 = 1/8", 28 = 1/4"
38 = 3/8", 48 = 1/2"
68 = 3/4", 88 = 1"

SPECIFICATIONS

ITEM	MODEL	SSSCM-18	SSSCM-28	SSSCM-38	SSSCM-48	SSSCM-68	SSSCM-88
CONNECTION	PT/NPT	1/8"	1/4"	3/8"	1/2"	3/4"	1"
OVERALL LENGTH	IN.	1-17/32"	11-59/64"	2-1/16"	2-25/64"	2-27/32"	3-1/16"
HEX	IN.	1/2"	9/16"	11/16"	7/8"	1-1/16"	1-3/8"
MATERIAL	BODY	303 GRADE STAINLESS STEEL					
	ELEMENT	316 GRADE STAINLESS STEEL(70 um)					
MAX OPERATING PRESSURE		300 PSI (21.1kg/cm ²)					
OPERATING TEMPERATURE		35~ 392°F (1.6~ 200°C)					
WEIGHT (APPROX.)	OZ.	0.63	1.03	1.63	2.91	4.85	7.81
UNIT PACK	EA.	5	5	2	2	1	1

FLOW CHARACTERISTICS VS ADJUSTMENT - STAINLESS STEEL SPEED CONTROL MUFFLER



A=25 PSIG B=50 PSIG C=75 PSIG D=100 PSIG

©2004 Advens Tech. All Rights Reserved.

*All tests are performed by Consolidated Laboratories, Inc.